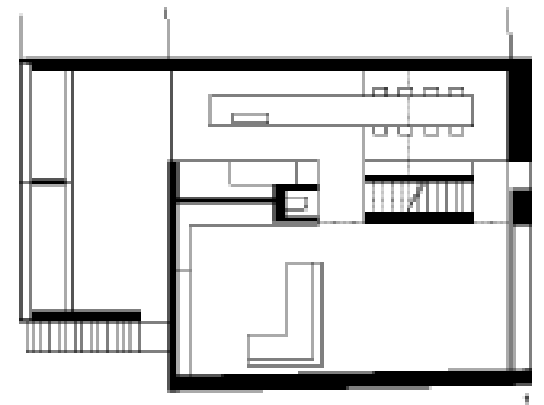
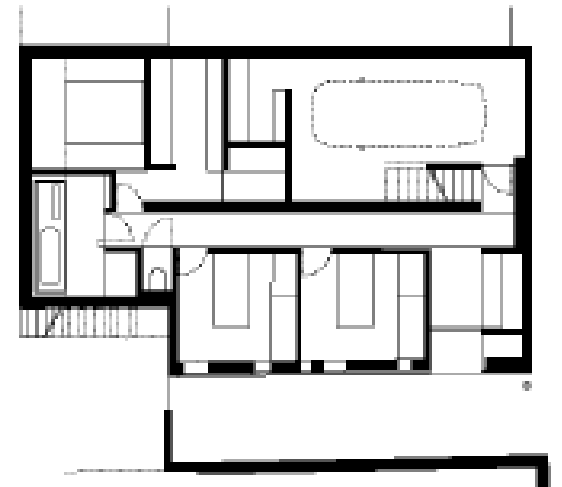
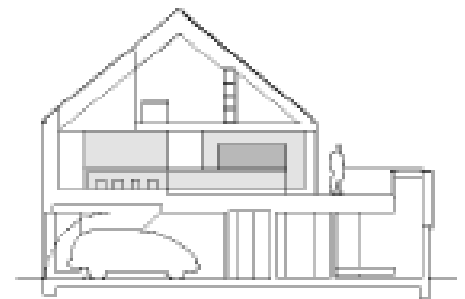
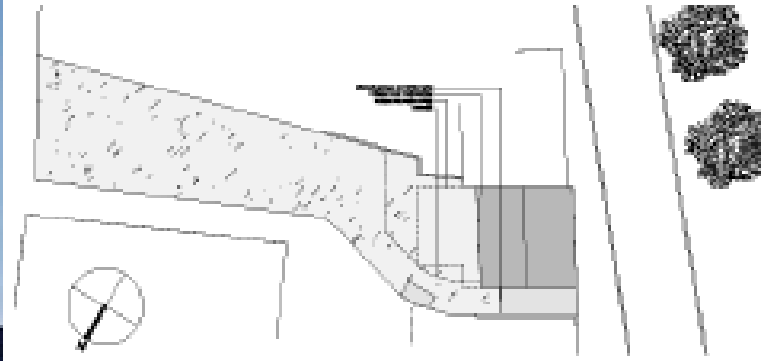


House Michèle & Johan / BRUNO VANBESIEN ARCHITECT





The house with the front facade oriented to the south and the back swirling between the gardens of neighbours has been functionally turned. The preceding park could become visually part of the house by placing the livingroom and kitchen on the first floor. The on-the-back situated bed-and bathroom have enormous glass parties above eye altitude, these window parties do also service as a railing for the terrace, as a result of which you have a continuous sense of the garden trough the glass volume. The frontage and the roof form a cover carried out in zinc made in unequal zinc counterfoils. The openings which were dictated from the interior could become fitted perfectly within these counterfoils.

A large roof glass ensures spacious light in the kitchen and gives visibility to the park from the office on the seconde floor. All surfaces are painted in white: walls,ceilings and floor, only the furniture, which is designed specially for this house is in wood. All furniture, and the stair to the 2nd level are finished in zebrano-wood, treated with a dark colored oil. It feels very massive, his mass mend to give a vivid element and it bounds all spaces together, it has only 2 openings, both black-colored, one for a fire-place, one for the cooker. The 7,5m long table in the kitchen serves as a dinnertable and a bit further as a working-space, it is executed in solidsurface in exact the same colour as the floor.

The window-profiles are or completely invisible or stressed, like the big frame of the kitchen window, this is overdimensioned, but can be slided completely in the wall to get a closer contact with the garden. There is a big difference between hights from space to space, by giving the kitchen a lower ceiling, the living room ceiling feels even more higher than it is. All technical devices such as structural elements, aeration, lichter gears, heating, music distribution are completely build in. The tight lining both horizontally and vertically ensure a perspective functioning and a larger space feeling. Photographer: Tim Van de Velde









BRUNO VANBESIEN ARCHITECT

bruno vanbesien is born in 1976 in Aalst, a small city in the surroundings of Brussels. He studied architecture at the Sint Lucas institute in Brussels where he is influenced by professors as Eugeen Liebaut, Francis Catteeuw and others. In Flanders around that period a new generation stood up that claimed the "new simplicity". Following principles as 'less is more' and with a deep respect for construction principles they try to express an new awareness of contemporary architecture. For 3 years he works in the office of Pascal Francois, where he learns the power of the detail, the perspectif and the respect for

the craftsmanship. In 2005 he starts an own office, wins an architectural website competition and a competition for the design of a television-studio initially build for the well-known television-program 'big brother'. In 2006 his interest in architecture and webdesign meets by becoming member of theinternational website www.world-architects.com where he is responsible for the contacts with Belgian architects. Because of his interest in detaillling he tries to focus on projects were interior meets exterior and where he is given much design-freedom.