

Wallpaper*

AUGUST 2009

*DESIGNINTERIORSFASHIONARTLIFESTYLE

UK £4.20
US \$9.50
AUSTRALIA \$ 10.50
CANADA \$ 10.50
DENMARK DKK 75.00
FRANCE € 8.50
GERMANY € 10.50
HOLLAND € 8.50
ITALY € 9.00
JAPAN ¥ 1740
SINGAPORE \$ 18.20
SPAIN € 8.50
SWEDEN SEK 75.00
SWITZERLAND CHF 16.00
UAE AED 45.00

Ace space

A new NYC hotel ups the design ante

Pipe dreams

Kitchens and bathrooms to get steamed up about

Crossover appeal

Starck, Newson and Hadid take on fashion

Design Directory

We get the measure of this year's finest furnishings and fittings



Plan for the future

The world's best young architects are ready to draw you a picture

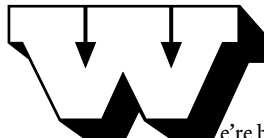
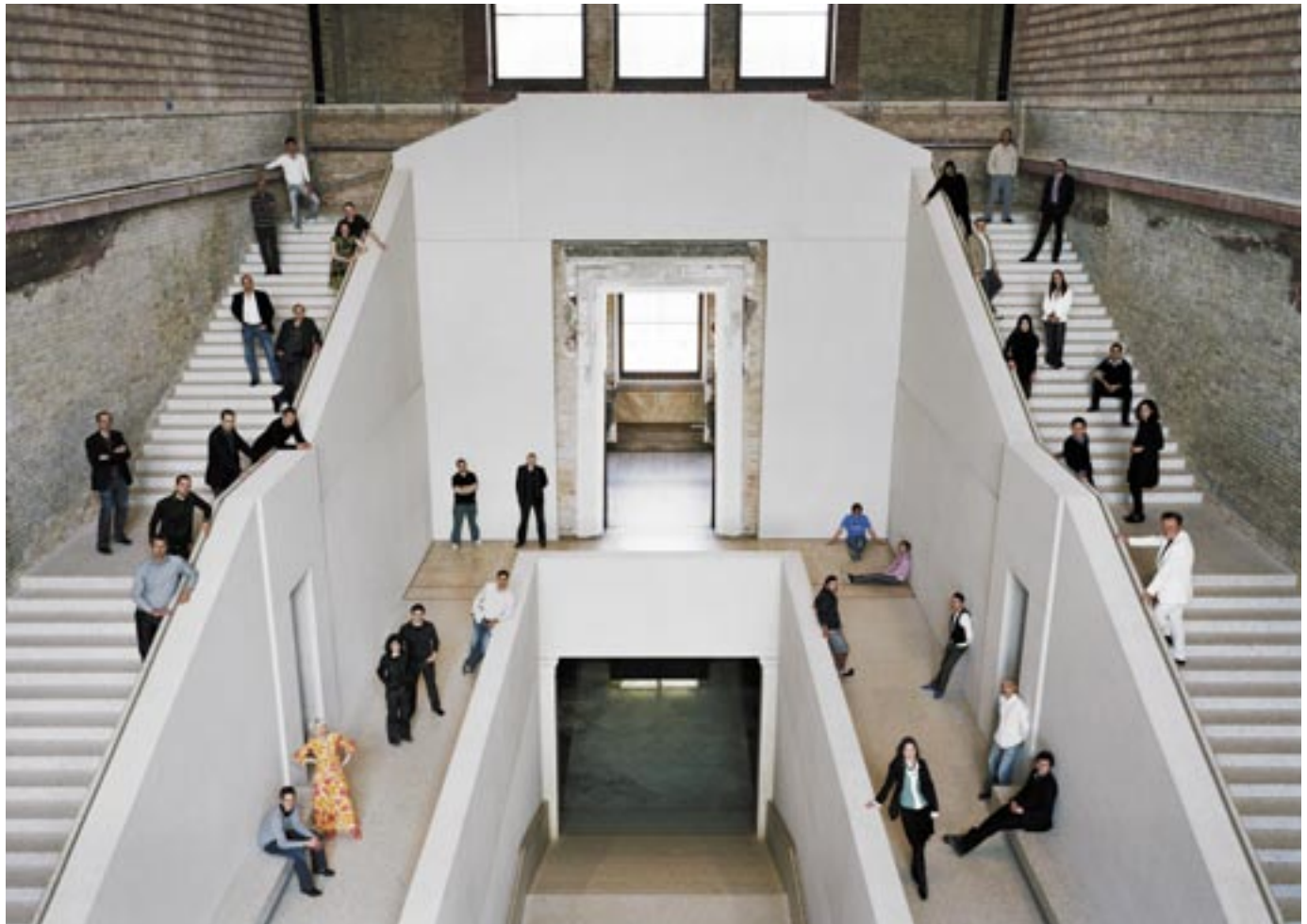
10'2"

CONVERSATION AREA



Pol's pots

Raf Simons talks to Alice Rawsthorn about the pull of Pol Chambost's pottery



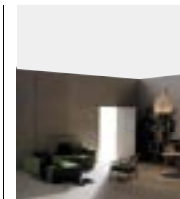
STEPPING UP

We've gathered today's top young practices in the newly restored Neues Museum, Berlin, for our Architects Directory (see page 076). Each firm was commissioned to design its ideal home. The models will form part of an exhibition we are taking on the road in September. For more details about Neues Museum and the best architectural practices, visit www.wallpaper.com ★

We're back on terra firma this month at the good ship Wallpaper*. After a few months spent navigating exciting but uncharted waters for our Made in China issue and then our Sex and Art extravaganza, we return refreshed and revitalised with something of a classic: the annual Design Directory. This is our territory, our home turf. But don't worry, we haven't put our feet up and switched to cruise control. Certainly not – complacency ain't our bag. In fact, we've done what we do best and have really pushed the boat out. And I promise, that is – almost – the last nautical metaphor.

As well as our definitive room-by-room round-up of the latest and greatest designs for your home, we've identified and profiled the world's 30 most talented young architectural practices. Always ambitious and determined to add value, we went that little bit further this year and commissioned each of our 30 chosen ones to not only design their ideal home (a practical, sustainable, functional and elegant residential prototype, adaptable to any plot), but to also produce an exquisitely crafted scale model (no soulless cad drawings allowed). They then had to hop on a train, plane, automobile (or boat) and assemble at our chosen photo-friendly location: David Chipperfield's masterpiece of restrained elegance – the reconstructed Neues Museum on Berlin's Museum Island.

Huge credit to our architectural team of Jonathan Bell and Ellie Stathaki along with Art Editor Sarah Douglas for their gargantuan efforts and powers of persuasion in securing this landmark portrait. And to the whole Wallpaper* crew for pulling together this shipshape design classic. I hope you enjoy it.
Tony Chambers, Editor-in-Chief



Main cover
Photography:
Matthew Donaldson
Interiors:
Benjamin Kempton
We stretch the rules of the influential 1960s Parker Morris report on housing standards, see House Rules, page 156



Limited edition cover
by Neville Brody
As well as designing this limited edition cover for us, top British graphic designer Neville Brody, known for his era-defining work on *The Face* and *Arena*, has also created a new font called Peace 2, see page 122. We've used it in our Design Directory, see page 075. Limited edition issues are available to subscribers. Go to www.wallpaper.com ★

Martin Lejarraga, Spain
Martin Lejarraga

Jürg Schmid Architekten, Switzerland
Rita Komosi, Jürg Schmid

Gort Scott, UK
Fiona Scott, Jay Gort

Group 8, Switzerland
Daniel Zambalde

X Architekten, Austria
Lorenz Prommegger

Phorm Architecture + Design, Australia
Karl Muckenschhabel

H2O Architects, France
Antoine Santard

Studiomama, UK
Nina Tolstrup

Diversity Architects, Greece/UK
Demetra Karabella, Nikolas Travasarios

FINE LINE

In David Chipperfield's reconstruction of the Neues Museum are representatives from 19 of the practices whose concept homes are featured



Platform 5 Architects, UK
Nicholas Bone

Antonino Cardillo, Italy
Antonino Cardillo

FGMF Arquitetos, Brazil
Lourenço Gimenez

Propeller Z, Austria
Kabru

Scot DiStefano, USA
Scot DiStefano

Bruno Vanbesien, Belgium
Bruno Vanbesien

ALA Architects, Finland
Janne Terasvirta

Moornoo Architects, Poland
Jakub Malowski

Liddicoat & Goldhill, UK
Sophie Goldhill, David Liddicoat

Terrey Haines, Ireland
Stephen Terrey

ARCHITECTS DIRECTORY 2009

Giving a fresh slant to our annual pick of the best young architects, we asked them to create model homes for us, displayed in the superbly rebuilt Neues Museum in Berlin

PHOTOGRAPHY: JASON SCHMIDT WRITERS: JONATHAN BELL AND ELLIE STATHAKI

THE BRIEF

As if an annual sweep of the world's most promising young architects wasn't ambitious enough, for 2009 we've decided to add a new twist to the directory. Rather than simply report on the newest firms to flash onto our radar, Wallpaper* has commissioned 30 of the finest young architects to design their ideal home. The concept was to create a practical house for tomorrow; a sustainable, functional and elegant residential prototype adaptable to any plot. Here, in David Chipperfield Architects' reconstruction of Berlin's Neues Museum, we show how the class of 2009 rose to the challenge.

- AUSTRIA
- AUSTRALIA
- BELGIUM
- BRAZIL
- CANADA
- CHILE
- FINLAND
- FRANCE
- GREECE
- IRELAND
- ITALY
- JAPAN
- POLAND
- PORTUGAL
- SPAIN
- SWITZERLAND
- UK
- USA



TIERNEY HAINES IRELAND

Stephen Tierney and Nicola Haines, both in their mid thirties, met at London's Bartlett School of Architecture in 1998. The couple now have a studio in Blackrock and combine practice with teaching. Mindful of Ireland's lamentable modern rural housing, they are dedicated to sustainable design. 'We take inspiration from the constant debate of ideas in teaching,' they say. Their South House model is a compact timber-framed house for a small urban plot. Oriented to the south, its solid walls are paired with a cascading roof of photovoltaic glass, solar panels and clear glazing, creating an open ground floor and increasing levels of privacy on the upper levels. The duo's upcoming works include homes in the UK and Ireland. www.tierneyhaines.com

PLATFORM 5 ARCHITECTS UK

Set up in 2006 by UK-trained Patrick Michell and Nicholas Bone, Platform 5 espouses a human, conversational approach to architecture. They want their designs to mediate between buildings and landscape, and say their 'work is a continuation of history, not a modernist rejection of the past'. Both Adolf Loos and Sir John Soane are name-checked as architects who could 'sequence space and create perverse relationships'. Their Courtyard House prototype is a modular two-bed home with moveable internal partitions and space for 'food production, wildlife and relaxation in its interlocking gardens'. Among the pair's upcoming projects are houses, hotels, and a Vietnamese business and cultural centre. www.platform5architects.com



X ARCHITEKTEN
AUSTRIA

Founded in Graz in 1996, X Architekten moved to Vienna in 2003. It opened a studio in Linz in 1999 and last year kick-started a joint venture with React Studio, creating the Bucharest-based Rex-Architecture. The core team comprises David Birgmann, Bettina Brunner, Rainer Kasik, Max Nirnberger and Lorenz Prommegger. 'The "X" stands for openness,' they explain. 'It signifies a quality that goes beyond a single person's abilities.' Here, they urge you to 'pimp up your roof', an experiment in increasing suburban density. The project imagines a typical saddleback-roof house transformed into a platform for a new dwelling, with the gable walls adapted into a running track.
www.xarchitekten.at

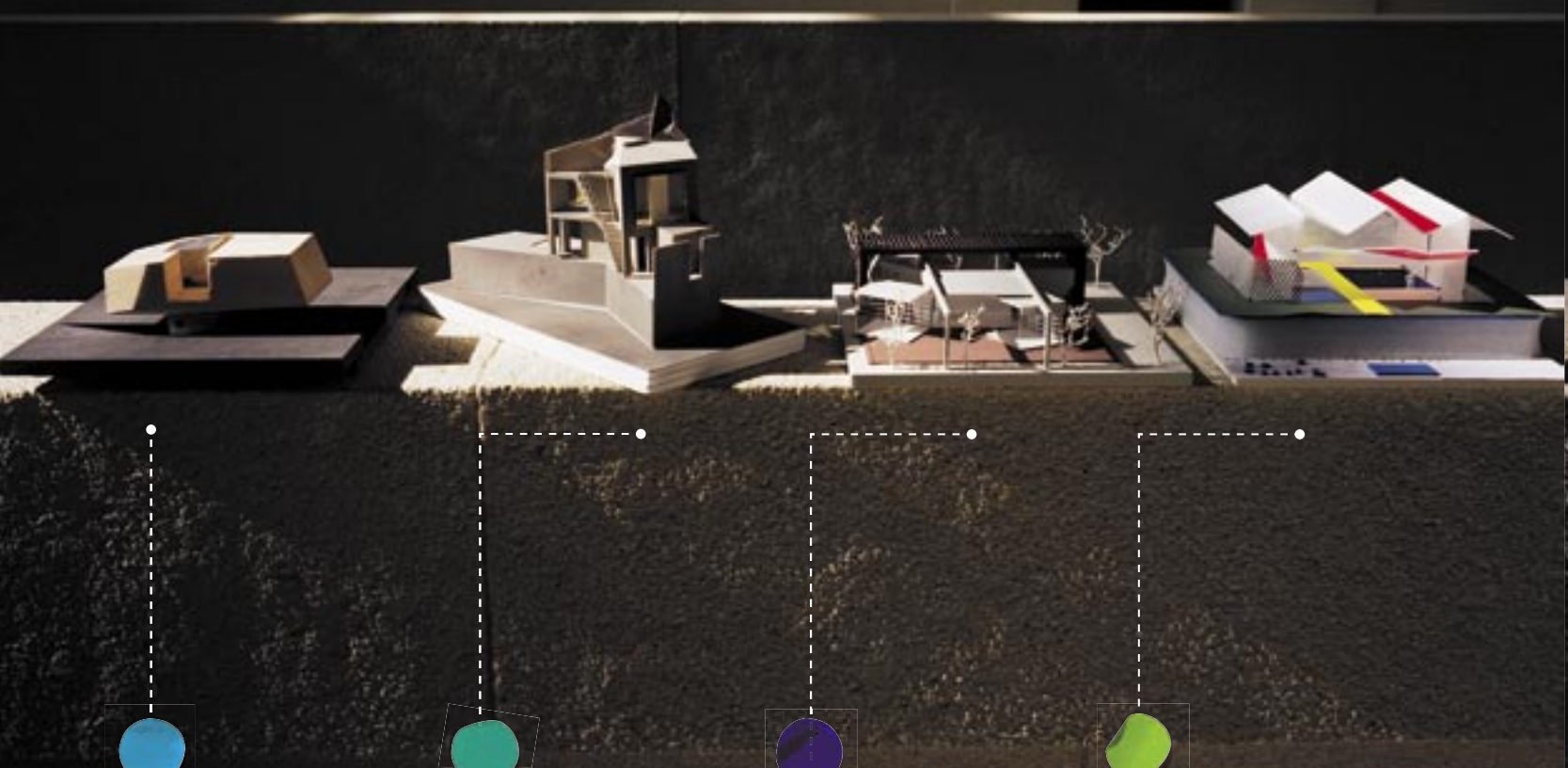


GROUP 8
SWITZERLAND

Group 8 consists of no fewer than nine partners, all of them graduates either of the Federal Institute of Technology of Lausanne (EPFL) or of the University of Geneva. Their inspirations range from vernacular architecture, nature, popular culture, music and technology to people and art. 'What is the future of single-unit housing? None. Indeed, the preciousness of soil has become such that "upwards" is the direction.' With this statement, Group 8 introduces Weph, a vertical volume, stacked prototype that suggests experimental urban housing for the future. Upcoming projects will harness solar, passive and low-energy systems and new means of communicating lightness and weight, or so the team promises.
www.group8.ch

BUILDING A FUTURE

From a prefabricated building to a log house whose electricity is supplied via an anaerobic composting system – where special equipment channels gas produced from waste – sustainability was key to the designs



PROPELLER Z
AUSTRIA

Propeller Z was founded in 1994 and consists of Turkish-born Korkut Akkay and Austrian architects Kabru, Philipp Tschofen and Carmen Wiederin. The collective trained in schools around the world, including Japan and the USA; describing their studio as a 'platform for space, content, material, form and programme research in all fields,' Propeller Z is constantly evolving. 'We should discuss how to dispose of and recycle buildings,' they say. 'Of course, it's difficult to imagine a brand-new expensive building as waste.' To this end, their concept examines the complexity of the modern house, and the way standards work against sustainable solutions. 'Does it make sense to expend such effort on a building that will be demolished by the next generation?' Their solution involves prefabrication, creating a house that is a kit of parts to keep the environmental impact down. Currently on the boards are a spectacular penthouse structure in Vienna and an elaborate courtyard house in Marrakech, while a sleek new winery in Austria is set for completion later in the year. www.propellerz.at

LIDDICOAT & GOLDHILL
UK

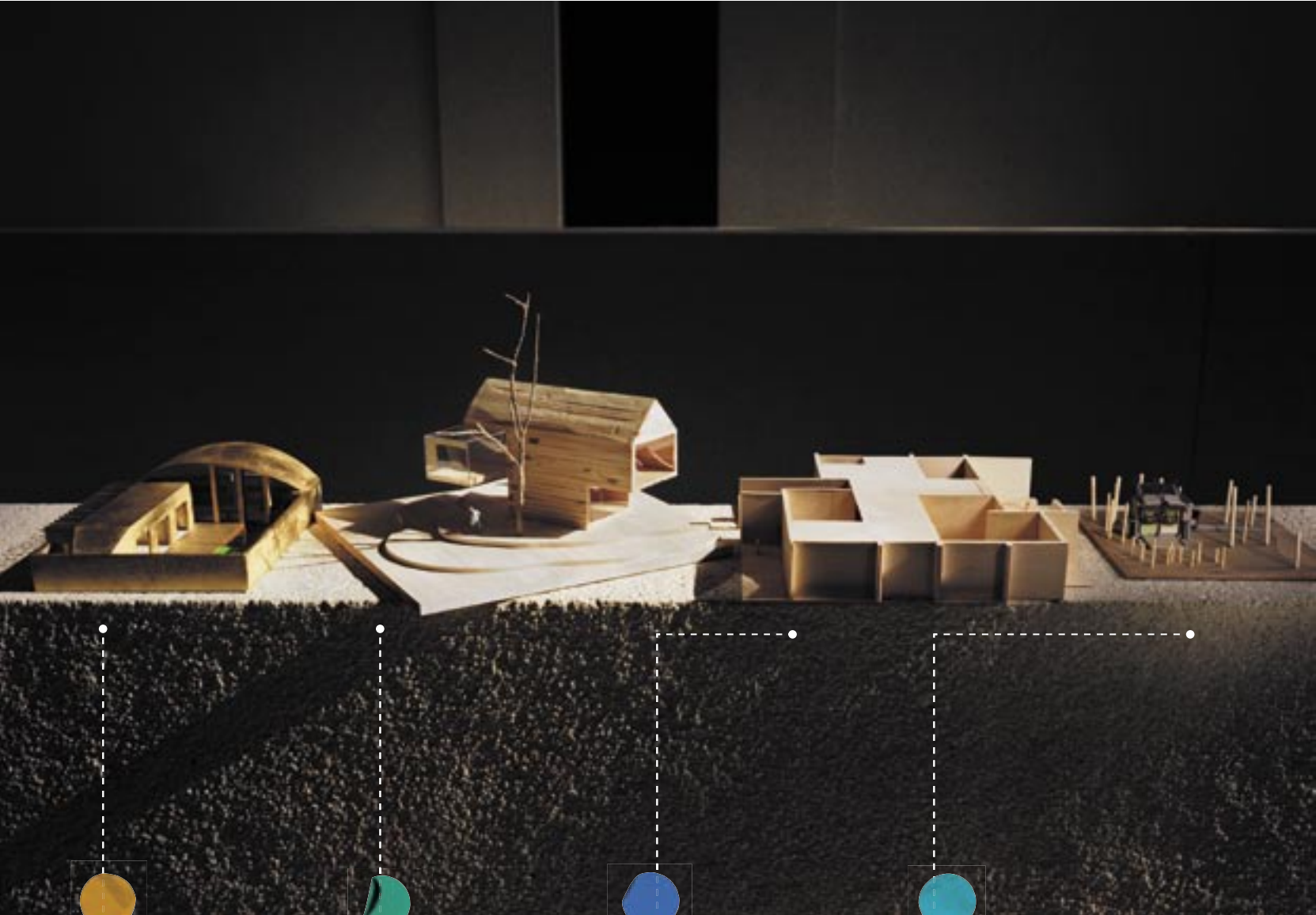
David Liddicoat and Sophie Goldhill met at London's Royal College of Art and founded their practice in 2007. Liddicoat studied at Cambridge before spending time in Daniel Libeskind's Berlin office, while after studies at the Slade and the Bartlett, Goldhill went on to work with Foster, EDAW and Waugh Thistleton. The married couple are both in their late twenties and have a pragmatic view of modern practice. 'We were born into Thatcher's free market, and trained during the late New Labour property boom: we are wary of the cult of newness. Ecological and economic pressures mean we must learn to live with less.' They also admire eccentric, emotional design. The Open Book House is a variation on the traditional London terrace, a design that promotes 'different modes of living'. This means a rejection of that modernist staple, the free plan, in favour of a house with ten rooms, 'each designed to have a distinct atmosphere, not a predetermined purpose'. The architects are working on several other structures in their own street and they're exploring a 'new micro-house typology'. www.liddicoatgoldhill.com

FGMF ARQUITETOS
BRAZIL

Brazil-trained Fernando Forte, Lourenço Gimenes and Rodrigo Marcondes Ferraz founded FGMF in 1999, while still students, and now lead a 20-strong team. 'Challenging our own perceptions is our main tool for creating new points of view,' they say. Brazilian culture – which they characterise as warm weather and friendly people – is a strong influence, reflected in the relation of interior and exterior spaces in their designs. Their Tic-Tac House is based on the concept of time. 'It expresses the constant need for change: nobody acts the same way in the morning, afternoon or evening... So why should our houses be always the same?' they explain. The building is a light prefab structure, made up of five modules. The central module acts as the kitchen and bathroom core, while the others rotate and can be reconfigured independently. The architects are committed to innovation and believe that intense academic and practice-based research is the key to good architecture, through challenging the given and making design a 'tool for the brand-new vision of the city'. www.fgmf.com.br

MARTÍN LEJARRAGA
SPAIN

Heading his one-man practice in Cartagena since 1991, Lejarraga always works alone, with the exception of especially large-scale commissions and competitions. A graduate of Madrid's School of Architecture, his work includes housing, cultural, civic and educational buildings, as well as art and exhibition designs. The award-winning practice has also been working on 'Fachades', a project about builders, with images produced in collaboration with photographer JM Diaz Burgos. The House in the Dry Pool is his experimentation with the empty and unused pools that surround us. Seeing the opportunities that lie in a dry pool's technological equipment, from thermal insulation to great orientation, he proposes a transformation of pool spaces into extensions, studios, even stand-alone houses. Lejarraga has been very interested in the advances of science but increasingly values the human presence throughout the design process. 'People are a true measure of architecture,' he says. Lejarraga remains confident that architecture can change the world. www.lejarraga.com



ANTONINO CARDILLO
ITALY

A born-and-bred Sicilian with a degree from the University of Palermo, Antonino Cardillo set up his Rome office in 2004. Hugely influenced by his professor, Antonietta Iolanda Lima, he says, 'I learned that in space, relations between things are more important than the things themselves.' History is another inspiration; he believes that without memory it is impossible to build for the present, and sees good architecture as an element that can unite people. Inspired by private-garden fences spread across Marrakech's dry plains, Cardillo's residential proposal is called Lime and Limpid Green House. Exploring the history of courtyard houses, he was challenged to define the notions of external and internal. The result was a home with a large patio, like those found in cities of the pre-modern Mediterranean. Currently, Cardillo is designing a private residence in Melbourne. He cherry-picks his projects, admitting his ideas might not suit everyone. 'In my houses, the interactions with environmental events such as sun, rain, wind and sounds are more important than objects or furniture.' www.antoninocardillo.com



STUDIOMAMA
UK

East London's Studiomama is a young practice – founded at the turn of the millennium – including architecture, products, furniture, interiors and accessories in its portfolio. Principal Nina Tolstrup explains: 'The range in disciplines is rooted in my Danish background and the tradition from architects like Arne Jacobsen, where design is considered in its totality. So the door handles, lighting, chairs and so on are designed to fit with the architecture.' As for her inspiration? 'It is all about life, place, people and interaction,' she says. Tolstrup's prototype led her back to Scandinavia. Designed for a forest bankside, the Square Log House is a reinterpretation of the traditional log house, taking advantage of wood's inherent insulating quality. Heating and cooling is generated via geothermal energy, and electrical needs are covered by an anaerobic composting system. Interested in building off the grid, Tolstrup is always sensitive to environmental factors. Her aim for the future is to explore international residential design, with a special emphasis on local craftsmanship. www.studiomama.com



BRUNO VANBESIEN
BELGIUM

Born in Aalst, just outside Brussels, Vanbesien, 33, studied at the Sint-Lucas School of Architecture before working for Pascal François, then setting up his own studio in 2005. Influenced by the natural and calm designs of Peter Zumthor, David Chipperfield, Aires Mateus and SANAA, he aims to investigate the basic principles of architecture and design for the everyday. 'I don't like supermarket architecture or Las Vegas architecture,' he explains. For our bespoke structure, Vanbesien opted for a small ecological house, easy to construct and requiring simple materials. Given that the assigned surface was just 100 sq m, he created narrow, stretched rooms to make the space look bigger. The Tetris House was designed as a series of cubic volumes – some closed to form rooms and some open as patios – and it can be opened up to form a single space. Vanbesien's approach is based more on the way materials are used than on expensive products. Good work, for him, is in the use of natural light and pure, clean spaces. He also acknowledges the importance of working with the right people. www.brunovanbesien.be



SCOT DISTEFANO
USA

With such diverse influences as poet ee cummings, composer Vivaldi, artists Martin Puryear and Robert Smithson, and architects Frank Lloyd Wright and Santiago Calatrava, DiStefano has an interesting portfolio. A sole practitioner, he founded his own business in 2000, after graduating from the University of Florida and working at Dan C Duckham. His approach has been dubbed 'organtech' architecture, though he incorporates technology with care: 'I have observed that [it] tends to create more problems than it solves,' he says. Pyrginae House is not exactly a 'prototype', as DiStefano finds the existence of a specific site and client crucial. Designed for himself, the house's footprint was kept to a minimum and it was located in a vacant plot close to his home. Its ecological features include passive lighting and ventilation, while the shape references the Pyrginae butterflies indigenous to the area. DiStefano would love to build for people of low means. 'Some call it "affordable housing". I think we should call it "affordable architecture",' he says. www.scotdistefano.com



JÜRIG SCHMID ARCHITEKTEN SWITZERLAND

Jürg Schmid gained experience at Burkhalter Sumi Architekten in Zurich and the École Polytechnique Fédérale de Lausanne before setting up his own practice. A key influence is John Lautner because, 'his buildings are remarkable for their sensitive balance between the natural qualities of landscape and the artificial qualities of built structures'. The Diamonds are Forever house has a 25 sq m footprint, so it can be constructed on level ground, ultra-compact sites, angled surfaces, or even on water. The roof is fitted with solar cells and collectors, with a wind generator in the centre. The house is built from Misapor concrete, so is heavily insulated thanks to the material's high foam-glass content. The easily separable materials mean it's recyclable, too. www.jsar.ch



GORT SCOTT UK

Jay Gort and Fiona Scott met when they were students at Cambridge. Now in their early thirties, they launched Gort Scott in 2007. They thrive on 'creative friction' and believe the right mix of space, materials and light should create something 'everyone instinctively has an affinity with'. Their Noll House is named for the 1748 map of Rome, which illustrates public space flowing through the solid private volume of the city. The house appears as 'a singular, compact rock-like volume from the exterior', while interior spaces of varying sizes are carved out. Heavy construction keeps energy costs low, with green space provided by a roof garden. Current projects include a new art gallery in Mayfair and a pub in Cambridge. www.gortscott.com

ARCHITYPES

These concept houses work hard to maximise design efficiency and integrity. For instance, Jürg Schmid selected walls of ultra-insulating Misapor concrete



DIVERCITY ARCHITECTS
GREECE/UK

In 2004, Divercity was founded in Athens by Nikolas Travarasos and Demetra Karabelia. In the following four years, Dimitris Travarasos, Christos Dimitroukas and Christina Achtypi joined as partners, and today the practice has offices in Athens and London. The team is inspired by all forms of culture, citing Hussein Chalayan's fashion, Enki Bilal's comic books and Ridley Scott's *Blade Runner*. Their Envelope House is based on prefabricated components, allowing for different layouts. It represents a structural experiment. 'Why should one build an independent structural frame with a solely supporting role when the components can incorporate this themselves?' they ask. Private residences and hospitality projects are next for the firm. www.divercityarchitects.com

H2O ARCHITECTES
FRANCE

From their base in the Marais, Paris, the three principals of H2o Architectes work on ground-up projects and the restoration of historic buildings. Founded by Jean-Jacques Hubert in 2005, later joined by Charlotte Hubert and Antoine Santiard, the practice has worked for major firms like Jakob + MacFarlane and Bernard Tschumi. In 2008, they won the NAJAP prize, given to young architects and landscape designers by the French government. H2o's project for Wallpaper* demonstrates a literal path through life, a route that coils up through the stacked structure for a fluid, multi-layered spatial experience, united by slot windows. New work includes renovating an existing structure in Paris to create social housing. www.h2oarchitectes.com

MODEL HOMES

The perfectly formed prototypes had small footprints but were big on creativity – take Cell Space’s pivoting rooms or Moomoo’s elastic walls, for example



CELL SPACE ARCHITECTS
JAPAN

Mutsue Hayakusa set up Cell Space Architects in 1991, after spending time working at Nihon Sekkei, one of the country’s architectural mega-practices. Now in her mid forties, the architect explains that her studio’s work is a constant search for solutions that ‘achieve a lasting beauty’. Following fashion is not the way forward, she says. ‘My goal is to create architecture that will use mobility and change of form as nature’s formative beauty does.’ Hayakusa is keen to stress that the best use of new materials and computer-aided design is to help ‘create forms that are closer to the natural world’, and cites Alvar Aalto as her favourite architect. The Revolving Walls house is a living space arranged around a main column, about which beds and table can pivot. ‘The revolving walls give the building multiple spaces and allow for changing light levels into the room to be according to the seasonal and daily variations. My ambition is to design beautiful building complexes, unified with nature, on a larger scale than the residential level,’ she says. www.cell-space.com

GONZÁLEZ/LARRAÍN
ARQUITECTOS
CHILE

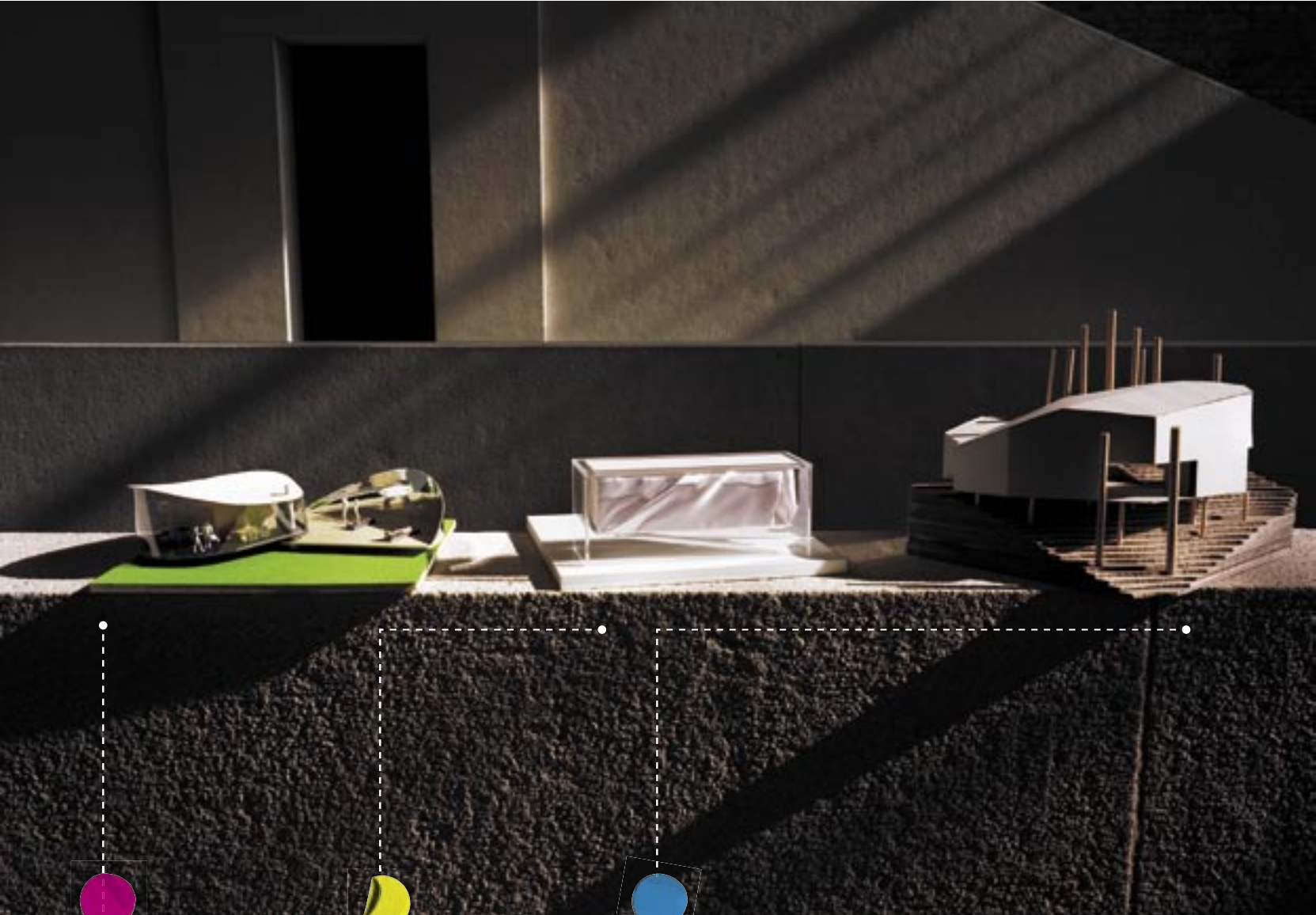
González Larraín was established in 2008, by Santiago-born partners Enrique González and Ignacio Larraín, who met at the Pontificia Universidad Católica de Chile. They admire the round-shaped, austere and timeless buildings and light play of Luis Izquierdo Wachholtz and Antonia Lehmann Scassi-Buffa, as well as Australian architect Glenn Murcutt’s research into the economy of sustainability. The practice is committed to research for materials according to the funds available and taking into account the building’s possible future life. Their Jeldes House is a study on one of their existing projects, the family house of a young couple. Aiming for an affordable, flexible and low-energy-consumption house in the semi-desert valley site, the pair designed a compact structure organised around two main areas – one private, one public. The layout is flexible: while cooking, dining and living areas are in an open-plan space, the bedroom is separated by a mobile wall. The structure’s winged shape allows for big openings for lighting and views. www.gonzalezlarrain.cl

REIGO & BAUER
CANADA

Architectural and marriage partners Merike and Stephen Bauer founded their studio in 2004, after studies at the University of Toronto and a spell working in the UK. ‘We want to bring exciting contemporary design to the mass market,’ they say. They describe their approach as ‘high-tech results through low-tech means’. Their work is energy-efficient, respectful of scale and suspicious of modernist clichés and ‘deadening uniformity’. With a nod to vernacular form, their concept design, Spec House 03, has an asymmetric roof punctured by notched openings revealing external decks contained within the superstructure. Using a standard wooden frame, Spec House 03 brings ‘architectural intrigue without adding to the cost of construction’. Standard finishes, fixtures and details are combined with bespoke elements like solar-heated hot water. In the future, they want to work more with private clients: ‘In North America fewer than ten per cent of houses being built involve an architect. We hope to nudge that number up, one house at a time.’ www.reigoandbauer.com

ANDRÉ DE FRANÇA E
CAMPOS E JOANA
MENDES PORTUGAL

After graduating from the University of Porto and working in the offices of Eduardo Souto de Moura and Carlos Prata, André de França e Campos and Joana Mendes Soldado established their own architectural practice in 2006. The pair rarely look consciously at the work of other architects for inspiration; instead, they use each brief’s context, literature, discussions with colleagues, art and music as their main references. Nevertheless, de França e Campos says that Souto de Moura will always remain a big influence. Both partners admit our brief confused them initially. ‘The programme was not specific and the site didn’t exist, so we decided that, as in painting, the house’s name should be Untitled,’ they say. They envisioned it as a shelter in the middle of a rich green forest, and their efforts to design around the existing trees resulted in a snake-shaped, tube-like design, raised on stilts. Their work is already recognised through several competition wins, and they will continue to see the genius loci (the understanding of a place) as key. Tel: 351.91 791 9771



ALA ARCHITECTS
FINLAND

Founded in 2004, ALA has already gained a lot of attention in its homeland thanks to its participation in a series of Finnish architecture competitions. The firm is headed by four partners, all in their mid thirties: Juho Grönholm, Samuli Woolston, Antti Nousjoki and Janne Teräsvirta. They work with an international team of 16, based in Helsinki, producing work that is 'a synthesis of analysis, lateral thinking, architectural allegories and misunderstandings'. The Focal House was designed to be adaptable to any site, as it responds to local solar conditions. A reflector is used to either heat or cool the rooms using an adjustable passive-heat control system, and rainwater is collected and stored. The layout is planned for maximum flexibility, and construction requirements are kept to a minimum. The firm strongly believes that architectural beauty comes from an efficient and analytical design approach, and its current projects include a Hanasaari housing scheme in Helsinki and the Keilaniemi and Otaniemi underground stations in Espoo. www.ala-a.com



MOOMOO ARCHITECTS
POLAND

Founders Jakub Majewski and Lukasz Pastuszka had been collaborating for years before finally setting up Moomoo Architects in 2008. Both in their mid twenties, the duo studied at the Technical University of Lodz. Currently, the Lodz-based team is five-strong, and experimentation is central to their approach. 'We are very impressed by using textiles, which are ethereal and light,' they say. 'It's amazing how you can connect rough and heavy concrete with very delicate and soft textiles.' For the directory, Moomoo designed the Houseview, a residence designed to give its occupants a 360-degree perspective regardless of where they stand. The first floor appears suspended in the air, hung from the metal structure and wrapped with an elastic material that can be stretched to create openings and windows; there are also moveable walls. In the future, the team will continue to explore their fascination with textile materials, unusual uses and simple solutions. 'We try to follow modern lifestyles and involve what inspires people in our work.' www.moomoo.pl



**PHORM ARCHITECTURE
+ DESIGN**
AUSTRALIA

When Paul Hotston returned to Brisbane in 2000, after a seven-year worldwide architectural sojourn, he founded Phorm, a dynamic studio with four to six members. The 40-year-old architect, who graduated from the University of Queensland, and his team have subsequently won awards from the Australian Institute of Architects. Among their influences are the Australian landscape and the timber tradition of the Queensland vernacular. The influence of each site is vital so for their concept house they had to define it to explore the ideas of placement and displacement – coordinates, as the name suggests, are 26°30'01" South. The main space is the loggia, an open, transitional interior/exterior space; while the rooms fold open to each other or into the landscape, with no glass used. It was planned as a low-cost, low-embodied-energy house. With projects ranging from a micro-resort in Fiji to involvement in the Queensland government's HEAT initiative promoting sustainable architecture, the practice is looking forward to busy times. www.phorm.com.au



Visit www.wallpaper.com to read more and see the full portfolios of all 30 of this year's selected architects, as well as images and information on the Neues Museum design by David Chipperfield Architects